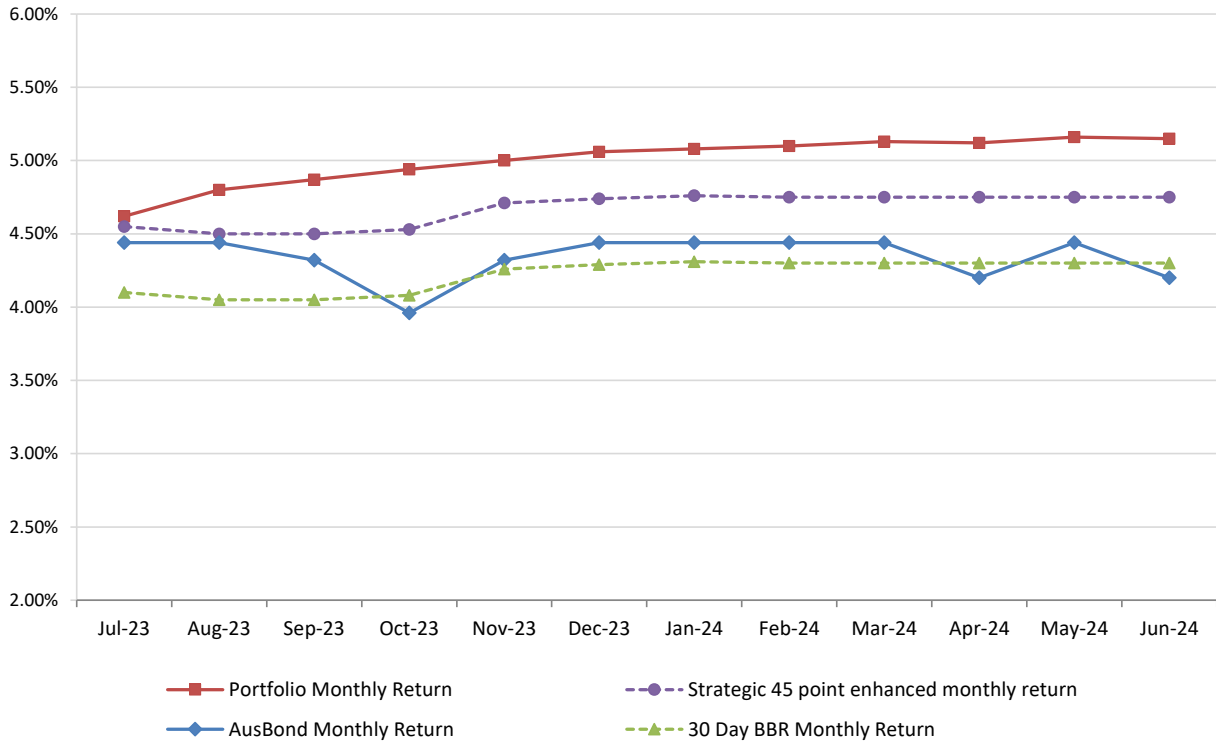


# **Attachment B**

**Investment Performance  
as at 30 June 2024**

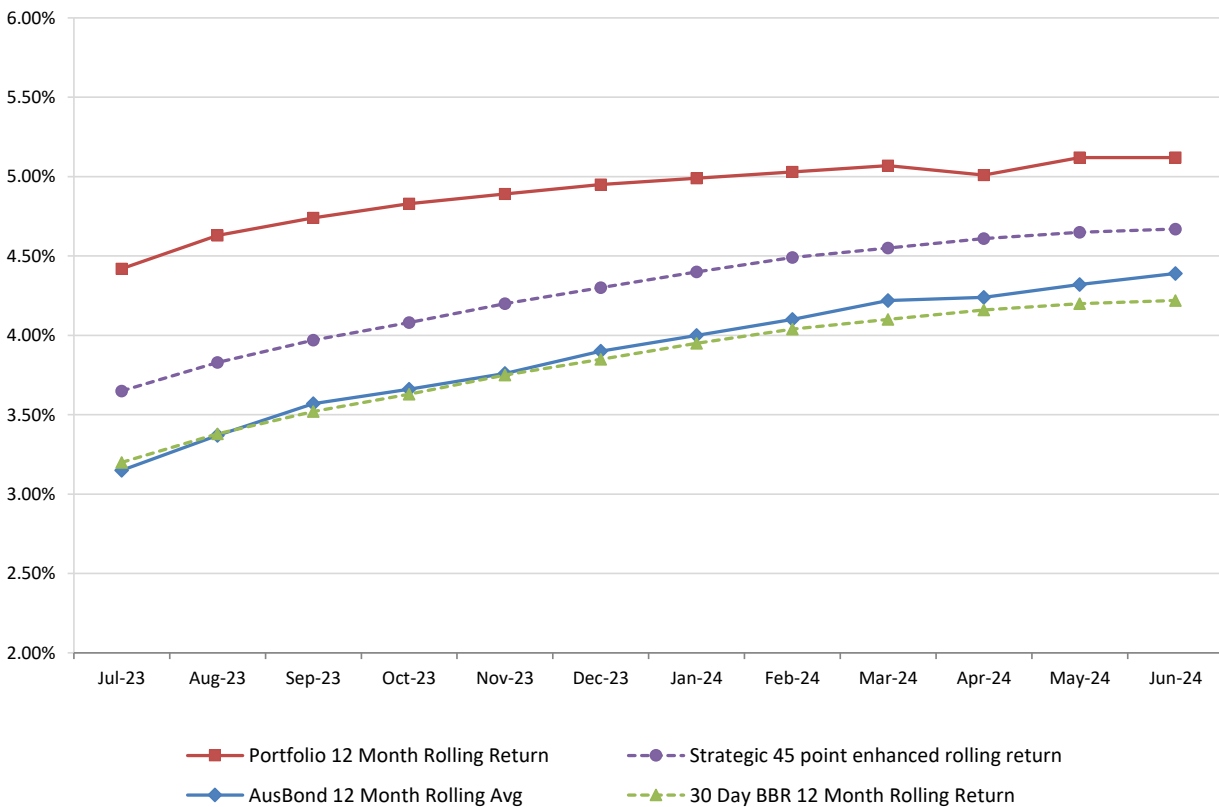
### Monthly Results

Actual Portfolio vs Strategic Enhanced Benchmark vs AusBond Benchmark vs 30 Day BBR Benchmark  
June 2024

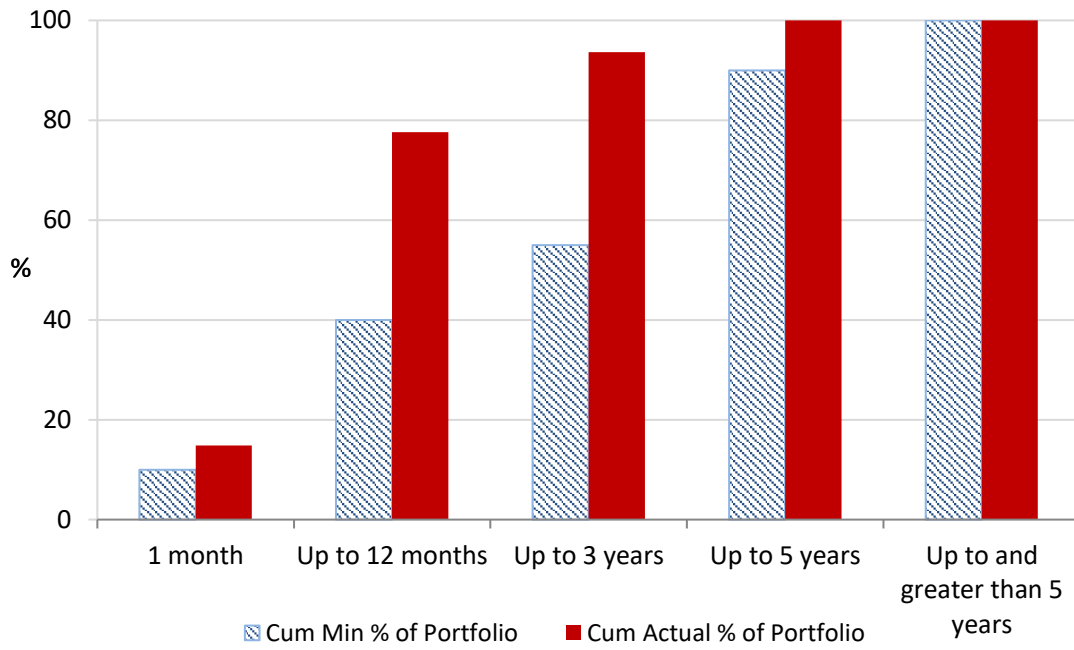


### 12 Month Rolling Averages

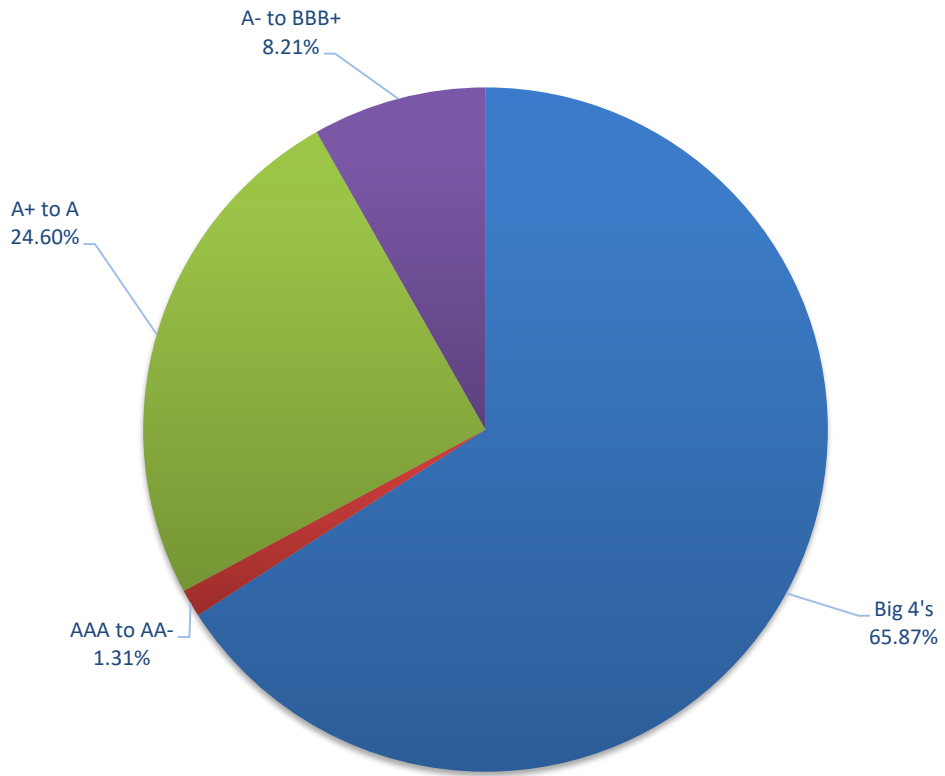
Actual Portfolio vs Strategic Enhanced Benchmark vs AusBond Benchmark vs 30 Day BBR Benchmark  
June 2024



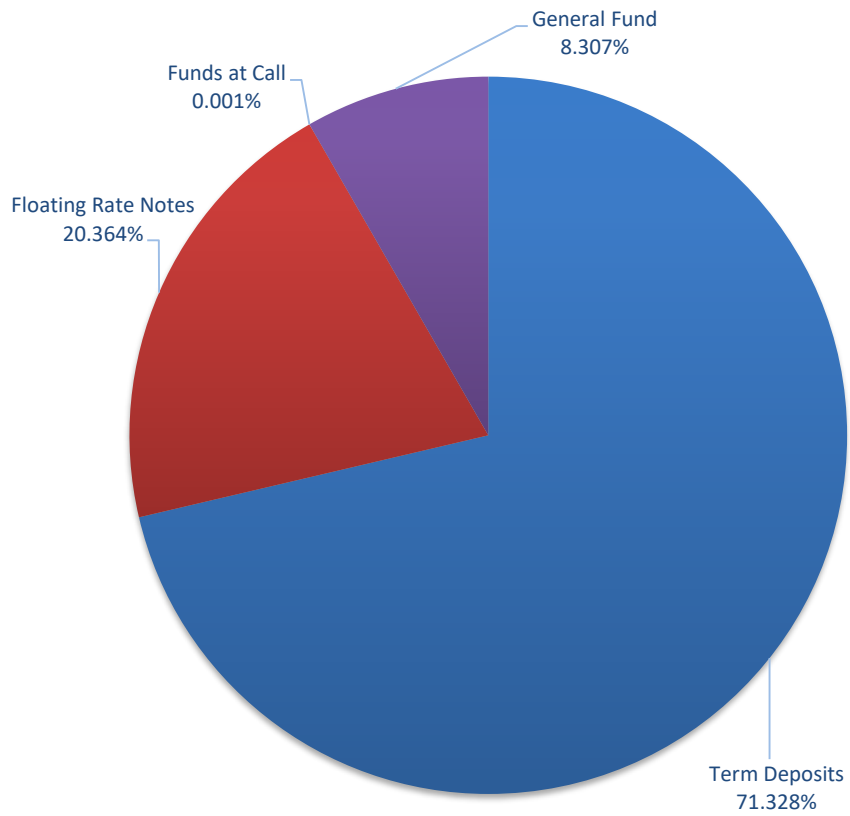
### Portfolio Liquidity - Minimum Allocations as at 30 June 2024



### Risk Profile as at 30 June 2024



### Risk Profile as at 30 June 2024



INVESTMENT AND CASH DISTRIBUTION BY FINANCIAL INSTITUTION				
as at 30 June 2024				
Institution Category	Financial Institution	Amount \$M	Financial Inst. %	Institution Cat. %
Australian Big 4 Bank (and related institutions)	ANZ Bank	27.0	3.5	
	Commonwealth Bank	111.3	14.6	
	National Australia Bank	125.7	16.5	
	Westpac Banking Corporation	239.4	31.3	
<b>Big 4 Total</b>		<b>503.3</b>		<b>65.9</b>
Other Australian ADIs and Australian subsidiaries of foreign institutions	Bank Australia Limited	9.5	1.2	
	Bank of Queensland	8.0	1.0	
	Bendigo & Adelaide Bank	31.5	4.1	
	Great Southern Bank (formerly Credit Union Australia)	6.5	0.9	
	ING Bank	86.5	11.3	
	Suncorp Bank	87.5	11.5	
	Macquarie Bank Ltd	14.0	1.8	
	Northern Territory Treasury Corporation	10.0	1.3	
Newcastle Greater Mutual Group Ltd	7.3	0.9		
<b>Other ADI Total</b>		<b>260.8</b>		<b>34.1</b>
<b>Grand Total</b>		<b>764.1</b>	<b>100.0</b>	<b>100.0</b>